



Photo courtesy of The Delaware Contemporary

"Wildflowers" by Gina Bosworth, one of the artists who will be part of SABA IV.

## Go on an (Affordable) Art-Buying Binge!

Just \$25 gets you an original work

By Michelle Kramer-Fitzgerald

The Delaware Contemporary gives us all the chance to live an art collector's life at its annual event, *SABA IV*, on Saturday, Nov. 17, 6-9 p.m. at the museum's Riverfront-area location. Dubbed a "Small Art-Buying Adventure," the event is a large-scale exhibit of selected 6x6-inch works by artists from across the world.

So far, the event has acquired pieces from emerging artists from the West Coast, international artists from as far away as China, and established artists such as Ola Rondiak, Stan Smokler, Rick Rothrock, Nanci Hersh and Eddy Rhenals-Narvaez. In addition, there will be plenty of pieces from our local community's talent. All artwork will be displayed anonymously until sold—and all will be available for sale to patrons at an exceptionally affordable sum of \$25 apiece.

"Part of the excitement with SABA is that none of the work is revealed until the event, and it's displayed anonymously, so you don't know whose work you are buying until you literally take it off the wall," says Delaware Contemporary Marketing Manager Tatiana Michels.

The event is capped off with live music from Milan and the Sour Goat, dinner by Drip Café and a cash bar. An exclusive Patron Preview begins at 6 p.m., serving complimentary champagne and hors d'oeuvres with the opportunity to preview and reserve one artwork choice before the Open Party, which begins at 7. Tickets for the Patron Preview are \$100; Open Party tickets are \$35 in advance or \$40 at the door. All are available at [decontemporary.org](http://decontemporary.org). ▶



**ONE WOMAN, TWO FAMILIES,  
AND A SLIPPERY SLOPE OF SANITY.**

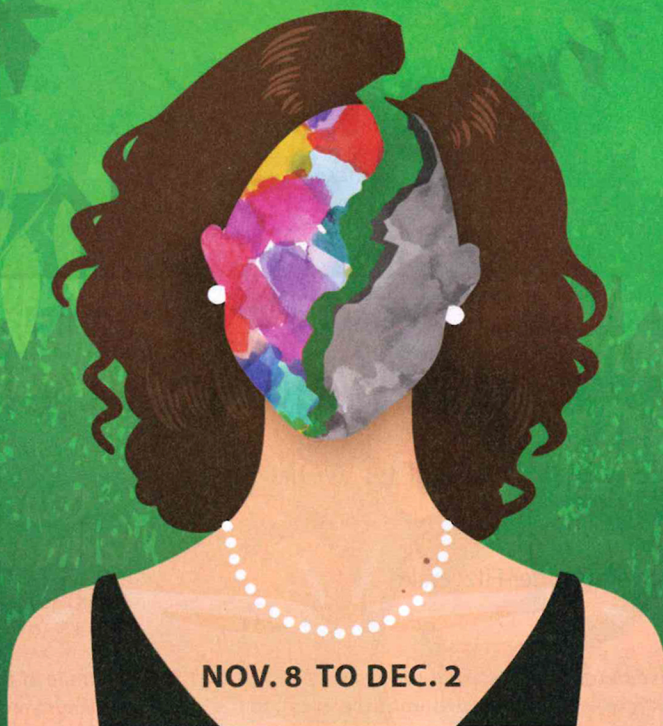
*"Ayckbourn ... creates an interesting study of reality and fantasy, which takes the audience along on its descent into madness on the back of howls of laughter."*

— Varsity

Delaware's professional acting company  
performing at the University of Delaware presents:

**Woman in MIND**

BY ALAN AYCKBOURN  
DIRECTED BY JACKSON GAY



NOV. 8 TO DEC. 2

UNIVERSITY OF  
**DELAWARE**

**rep**  
RESIDENT  
ENSEMBLE  
PLAYERS

ROSELLE CENTER FOR THE ARTS | NEWARK, DE  
(302) 831-2204 | WWW.REP.UDEL.EDU

Supported in part by:



**WATCH**

**GO ON AN (AFFORDABLE)  
ART-BUYING BINGE!**  
continued from previous page

"While all the works available during SABA are 'unlabeled,'" says Michels, "we wanted to give patrons a sneak peek and acknowledge two participating artists in honor of the Contemporary's 40th anniversary—Gina Bosworth and Rick Rothrock.

"Gina was our first executive board president and as one of our founding members, her presence has been instrumental in shaping the vision and direction of Wilmington's art environment," notes Michels.

In addition to helping establish The Delaware Contemporary in 1979, Bosworth owned and operated a business, Axis Fine Arts. She has exhibited regionally and nationally, with exhibitions at the Delaware Center for Horticulture, the Read-Johnson Gallery in Santa Fe, N.M., and the Delaware Art Museum. Bosworth has also been the recipient of the Delaware Division of the Arts Opportunity Fellowship and the Interweave Press Award for best in show at the Northern Colorado Exhibition.

Michels notes that Rick Rothrock spearheaded the development of an artist collaborative called the "ArtSquad" in the 1970s that created participatory, environmental art installations throughout the Wilmington area. Rothrock's endeavor eventually led to the establishment of the Delaware Center for Contemporary Art (now The Delaware Contemporary). He went on to serve as the first acting director and remained on the board of directors for eight years. Since then, he has created public works for institutions across the nation.

Both Bosworth and Rothrock have or will have exhibits at the Contemporary this season as well. Bosworth's, called "Confluence," is running now through March. Rothrock's joint exhibition with Stan Smokler, entitled "Origins," will be on display Jan. 8 through April 21.

"We're pleased to have had an incredible amount of donations from artists at all careers levels," Michels says of the event. "The essence of SABA is that not only does it spark an interest in art collecting for those that may not know where to begin, it gives all artists equal opportunity to showcase their work in a museum setting."

What's more, Michels adds, the event's timing and price is perfect for one-of-a-kind holiday gifts.